

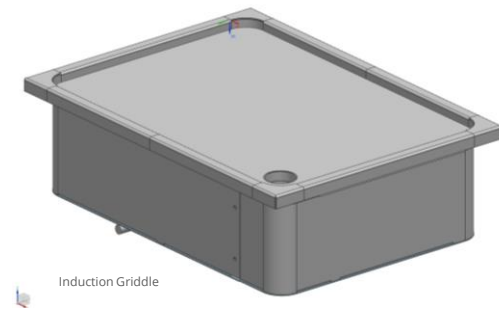
Compactmodul Griddle

Induction Griddle (built-in), 1 frying zone

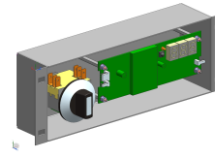
Model

SH/GR/IN 3500

SH/GR/IN 5000



Induction Griddle



Operation

Features

Powerful built-in induction griddle built with one frying zone. Equipped with "RTCSmp" (Realtime Temperature Control System) technology.

Material: Chrome nickel steel 18/10 DIN 1.4301.
Space-saving and compact design of the frame construction with low height, with deep-drawn griddle plate inserted at the top.

Specially developed griddle plate with a polished HPCR-INOX surface treatment.

Curved and smooth surfaces allow easy cleaning.

The energy is transmitted via the coil located under the griddle plate. The power electronics is part of the compact modul.

Maximum operational reliability thanks to:

RTCSmp technology enables temperature-controlled frying with non-contact temperature measurement and control in real time.
RTCSmp electronic temperature monitoring of the induction coil, power coil and logic print.
RTCSmp electronic monitoring of the energy supply.

An optimal air supply via two fans integrated in the bottom of the device for heat sink and coil. The cooling process of the power parts and the coil is carried out via an air duct system.

The temperature regulation is carried out via a rotary switch, whereby the setpoint and actual value temperature is visualized via a 7-segment display.

EMC radio and network interference complies with EU standards. Connection cable ready for plug & play.

Meets the latest regulations
EN 60335-1/-2-36, EN 62233,
EN 55011, EN 61000
CE compliant

Technical Data

Nominal power:	230V, 1Ph, 3.5kW, 15A 400V, 3Ph, 5 kW, 8A
Cooling air requirements:	150 m ³ /h (max.) 10700 mm ² (min.)
Frying zones:	1
Frying surface:	493 x 352 mm
Temperature range:	50 - 230 °C
Heating time:	4.5 min (von 20 auf 200 °C)
Power per frying zone:	3.5 kW 5 kW
Number of coils:	1
Dimension:	531 x 390 x 176 mm
Weight:	24 kg

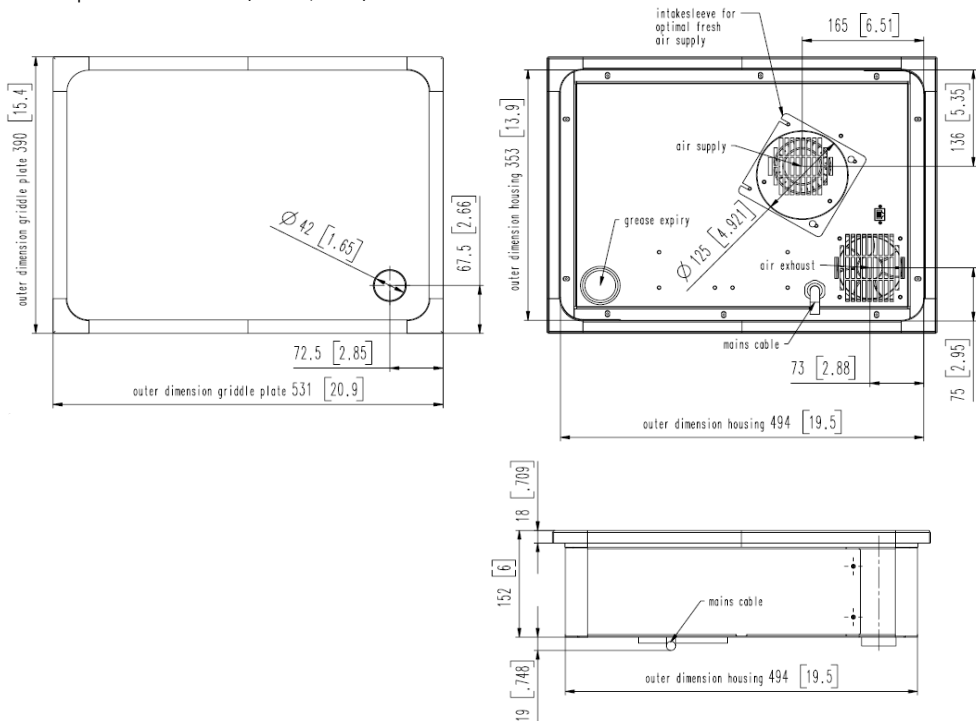
Options

- Built-in frame
- Built-in kit (ventilation)

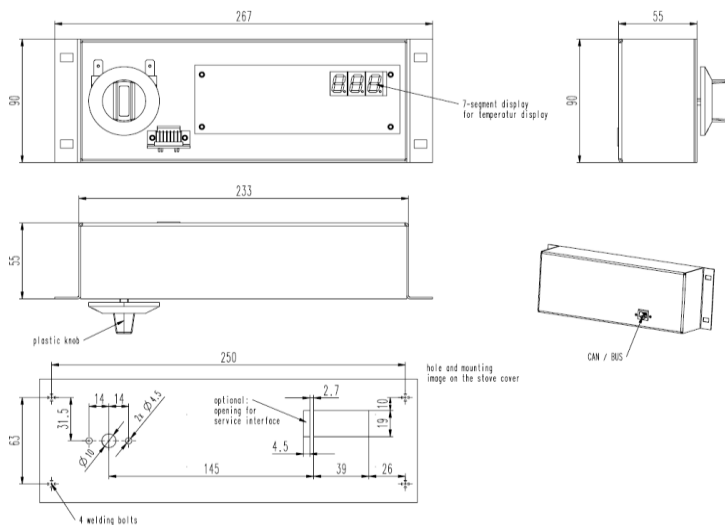


Unit dimensions

- Compactmodul Griddle (3.5 kW, 5 kW)



- Operation to Compactmodul Griddle



EN | © 2021 INDUCS AG. All rights reserved. Technical changes and errors reserved