



Project _____

Item No. _____

Quantity _____

16" PIZZA DELIVERY SYSTEM



FEATURES

- Designed for a pizzas up to 16-inches (41 cm)
- Induction-charged thermal disc keeps up to three pizzas at a consistent, hot temperature for up to 30 minutes
- Fast heat-up – initial charge takes less than two minutes; recharges in as little as 60 seconds
- Cool to the touch charger surface
- Designed to withstand exposure to grease, oil, flour, and other food substances
- Lighted display for easy operation
- Cordless delivery bag with VaporVent™ lid to eliminate condensation
- Lightweight – delivery bag and pellet have combined weight of 3.9 lb.
- FlashPak Pizza Disc and Pellet Centering Tray can be removed for bag cleaning and replacement
- Self-diagnostic features alert user in the event of an error
- Two-year Advanced Replacement Warranty (charger only)

PERFORMANCE

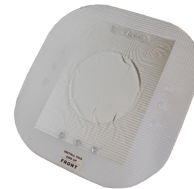
The CookTek® Pizza Delivery System is comprised of a lightweight thermal disc (FlashPak™ pizza disk), pellet centering tray (PCT), system-specific delivery bag (VaporVent™), and an induction charger base. The FlashPak™ disc and PCT tray reside in the VaporVent™ bag. When the bag is placed on the charger, the disc automatically heats up. After it is heated to the desired temperature, the thermal disc automatically stops heating. Once removed from the charger, the thermal disc retains its temperature for up to 30 minutes.

ACCESSORIES (NOT INCLUDED WITH CHARGER PURCHASE)

- FlashPak™ Pizza Disc (Part #400017)
- 16" Pellet Centering Tray (Part #300811)
- VaporVent™ Bag with Pellet Centering Tray (Part #300878A)



400017



300811

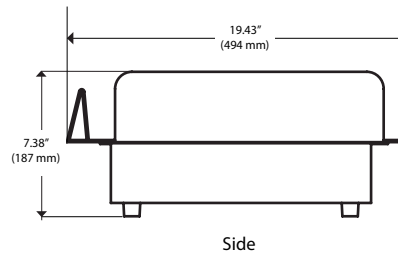
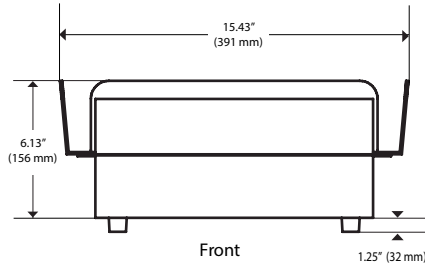


300878A

CERTIFICATIONS



Many local codes exist and it is the owner and installer's responsibility to comply with those codes. CookTek reserves the right to make substitutions of components or change specifications without prior notice.



DIMENSIONS		
Full Unit Height	7.38"	187 mm
Housing Height	6.13"	156 mm
Full Unit Width	15.43"	391 mm
Full Unit Depth	19.43"	494 mm
Feet Height	1.25"	32 mm
Max Ambient Temperature	120°F	49°C
CLEARANCE		
Front	2"	51 mm
Rear	2"	51 mm
Below	6"	152 mm
ELECTRICAL SPECIFICATIONS - SINGLE PHASE		
MODEL PTDS 1800/120 AND PTDS100		
US/Canada	602201	100-120 VAC, 50/60 Hz, 15 amps 600-1800 W
MODEL PTDS 1800/240 AND PTDS200		
US/Canada	602301	208/240 VAC, 50/60 Hz, 8 amps 600-1800 W
UK	602302	200-240 VAC, 50/60 Hz, 8 amps 600-1800 W
International	602303	200-240 VAC, 50/60 Hz, 8 amps 600-1800 W
Australia	602304	200-240 VAC, 50/60 Hz, 8 amps 600-1800 W
Japan	602306	200-240 VAC, 50/60 Hz, 8 amps 600-1800 W
South Africa	602307	200-240 VAC, 50/60 Hz, 8 amps 600-1800 W
Israel	602308	200-240 VAC, 50/60 Hz, 8 amps 600-1800 W
Saudi Arabia	602310	200-240 VAC, 50/60 Hz, 8 amps 600-1800 W
SHIPPING INFORMATION		
Packaged Height	13"	330 mm
Packaged Width	23"	584 mm
Packaged Depth	24"	610 mm
Packaged Weight	26 lb.	11.8 kg
Item Class: 250 NMFC #26710		



US/CANADA (100-120 VAC)
NEMA 5-15P



US/CANADA (208/240 VAC)
NEMA 6-20P



UK
BS1363, 13A, 230V



INTERNATIONAL
CEE 7/7 Schuko, 16A, 250V



AUSTRALIA
10A, 250V



SOUTH AFRICA
BS546



ISRAEL
SI 32, 16A, 250V



SAUDI ARABIA
BS1363, 13A, 230V



Dedicated circuit required for each installation.

Global Operations

2801 Trade Center Drive / Carrollton, Texas 75007 USA
 US: 800.90TURBO (800.908.8726) / International: +1 214.379.6000
 Fax: +1 214.379.6073 / www.turbochef.com / www.cooktek.com